

project profile

Central City Toyota – Philadelphia, PA



Project Information

- **Building Use:** Temporary Sales Office
- **Total Square Footage:** 4,560
- **Days to Complete:** 5



Situation

Central City Toyota in Philadelphia, PA needed a facelift to keep pace with tough competition. However, sales lost to a disruptive construction project would be cost prohibitive. It needed a temporary home to keep sales and service on track throughout its showroom renovation.



Solution

They turned to ModSpace. Using space on the dealership lot, ModSpace delivered and configured 5 modular units to create a 4,560-square-foot sales office. The new building was a close replica of the dealer's sales and services departments and its customer lounge.

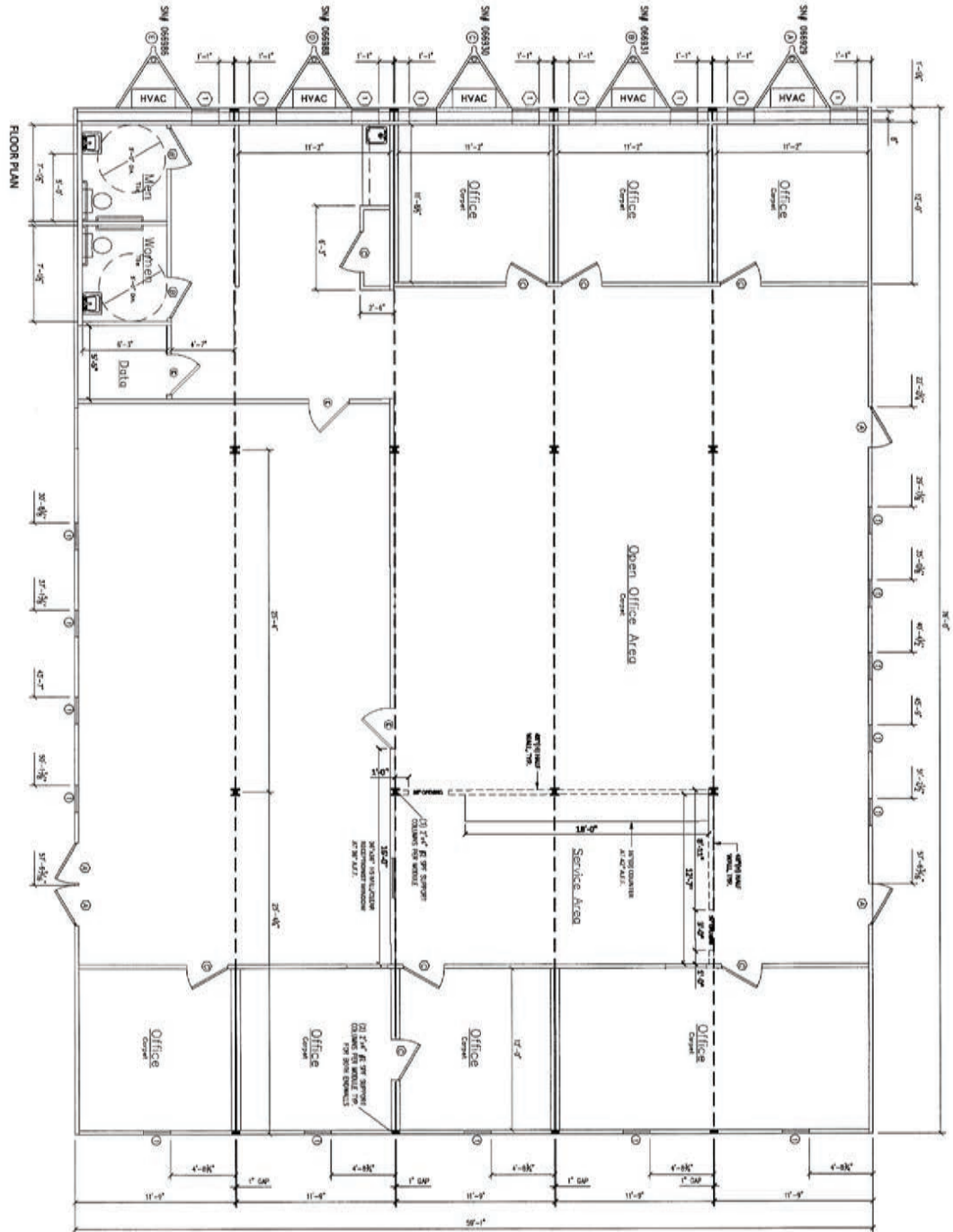
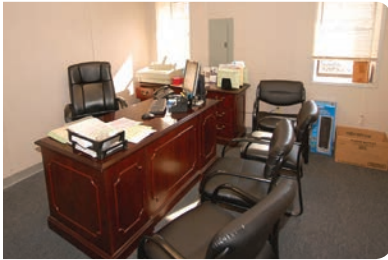
The temporary office was ready in 5 days, so the Central City team had time to move its operations before showroom construction began. Sales, service, parts and (more importantly) the dealer's customers never skipped a beat.



Central City Toyota – Philadelphia, PA

“They worked with us on the design and incorporated all the important elements we wanted. It’s keeping us busy. We’re very happy with it, and the continuing service we’ve received.”

Jamie Haberle
Service Manager
Central City Toyota



**Contact a ModSpace specialist
about your space needs today.**

U.S. 800-523-7918 | www.ModSpace.com
Canada 800-451-3951 | www.ModSpace.ca

