

project profile

PSEG Power LLC – Sewaren, NJ



Project Information

- **Building Use:** Administrative Office
- **Total Square Footage:** 2,160
- **Days to Complete:** 87



Situation

When PSEG System Maintenance Division outgrew its existing office, the company set its sights on a new space that would be consistent with its commitment to a greener future. They turned to ModSpace.



Solution

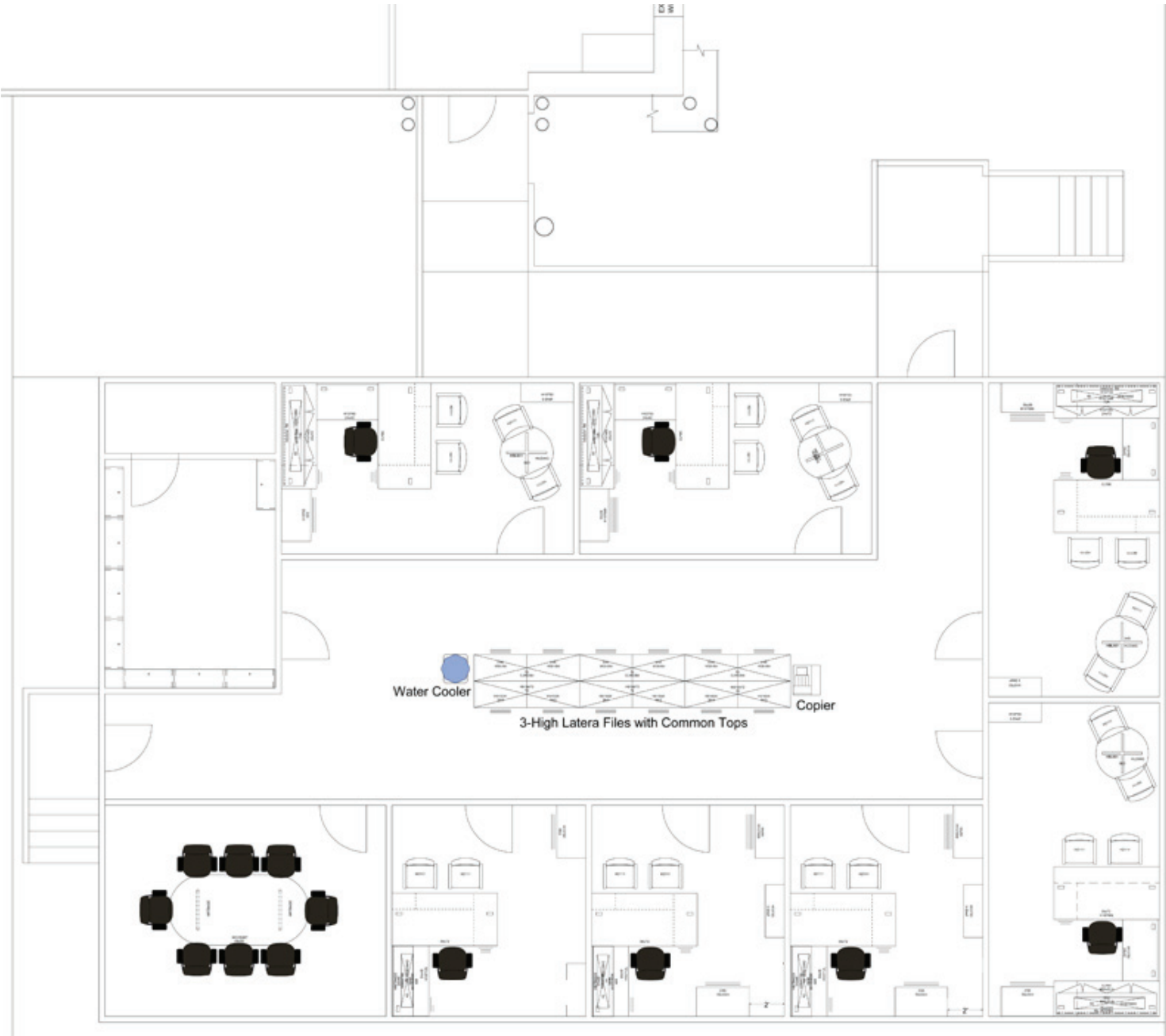
ModSpace helped PSEG realize its vision with a new LEED-certifiable facility that was ready for occupancy in less than 90 days. Working in lock step with representatives of PSEG, ModSpace built the new office from four modules that can be easily relocated and reused, which will reduce future building costs and construction waste.

Exterior and interior aesthetics were designed and built to match the look and feel of PSEG's neighboring building just 20 feet away.

The LEED-certifiable building incorporates systems that reduce the building's water consumption and increase energy performance. Indoor Environmental Quality was a significant part of obtaining LEED credits. The IAQ management plan involved the use of low emitting materials and controllability of lighting and thermal comfort systems. Careful construction waste management, the use of recycled content and recyclability were also keys to keeping the project green.

LEED certification for this building is currently in process. PSEG employees have moved in and are enjoying their new sustainable office building.

PSEG Power LLC – Sewaren, NJ



Contact a ModSpace specialist about your space needs today.

U.S. 800-523-7918 | www.ModSpace.com
Canada 800-451-3951 | www.ModSpace.ca

